


Barcode and Magnetic Stripe Reader for Latitude 12 Rugged Tablet



Notes, cautions, and warnings

 **NOTE:** A NOTE indicates important information that helps you make better use of your computer.

 **CAUTION:** A CAUTION indicates either potential damage to hardware or loss of data and tells you how to avoid the problem.

 **WARNING:** A WARNING indicates a potential for property damage, personal injury, or death.

Copyright © 2016 Dell Inc. All rights reserved. This product is protected by U.S. and international copyright and intellectual property laws. Dell™ and the Dell logo are trademarks of Dell Inc. in the United States and/or other jurisdictions. All other marks and names mentioned herein may be trademarks of their respective companies.

2016 - 02

Rev. A01

Contents

1 Introduction.....	4
2 Unique features	5
3 Quick Installation.....	7
Features Overview.....	7
4 Driver installation.....	9
5 Technical specifications	12
6 Contacting Dell.....	13

Introduction

The **Barcode and Magnetic Stripe Reader for Latitude 12 Rugged Tablet** is a new generation imaging system that provides un-paralleled performance on just about any type of data – from 1D and 2D bar codes to photos and searchable and editable legal, letter, A4, A5 documents and magnetic stripes.

Unique features

Barcode scanner

The Barcode scanner's advanced technology offloads a portion of the processing to the source of the image — the scan engine itself — thereby reducing unnecessary delay and delivering a faster data capture experience. This unique approach helps businesses in just about any industry improve user productivity and business efficiency.

Salient features of the Barcode scanner:

- **Support for MIPI and parallel interfaces** - Reduces integration time and cost by eliminating components
- **Comprehensive data capture capabilities** - Capture 1D and 2D bar codes in milliseconds, from high-resolution photos, to letter, legal, A4 and A5 documents that are fully searchable and editable
- **Extraordinary working range** - Capture data farther than 36 in./92 cm away
- **Extra wide field of view** - Easy close-up reading of large bar codes as well as multiple bar codes
- **Exceptional motion tolerance** - Delivers extraordinary scanning speed on all bar codes, increasing throughput and productivity in virtually any application
- **Advanced document capture** - With advanced intelligent document capture technology, it makes it easy to capture documents that are highly legible and searchable. With the single press of a button, this intelligent software determines when conditions are ideal to capture the highest quality image, taking the guesswork away from users.

Magnetic Stripe Reader

The Magnetic Stripe Reader is a magnetic sensing, media validating, and tamper resistant security module for digital identification and authentication architecture that safeguards consumers and their personal data.

Salient features of the Magnetic Stripe Reader:

- **Strong Encryption**: Encryption scrambles the data at the point of swipe, providing instant protection.
- **Counterfeit Detection**: The magnetic stripe reader ensures legitimate cardholder data by successfully identifying the card's unique features and proving its authenticity.
- **Tamper Recognition**: Recognizes tampered cardholder data and assures that transactions are only performed using legitimate, unaltered cardholder information.
- **Data Relevance and Integrity**: Validates the relevance and integrity of the cardholder data gathered by a swipe, dip, or insertion of a card. To know that the data is fresh, the reader itself supports mutual authentication, session management, and data integrity verification.
- **Secure Tokenization**: Supports secure tokenization so that users do not have to store the actual PAN data on their host system.
- **Dynamic Digital Identification**: Offers data obsolescence or auto-expiration by generation of dynamic authentication transaction values that change with each swipe of a card. This method assures that the cardholder track data is genuine – and has not been obtained from a breach or from a counterfeit card.

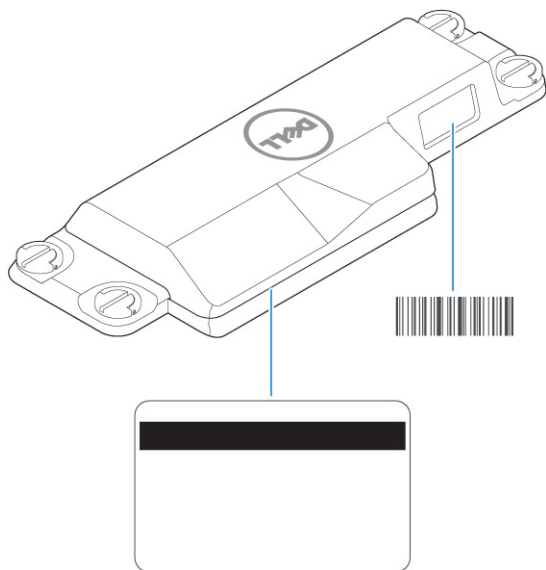
- **Device Authentication/Host Authentication:** The magnetic stripe reader can be configured to authenticate a host before sending the encrypted card data.



NOTE: The rugged tablet uses the Zebra SE-4750 scan engine. Refer to this model number in the *Advanced Data Formatting and Bar Code Scanner Configuration* documents at www.dell.com/support


Quick Installation

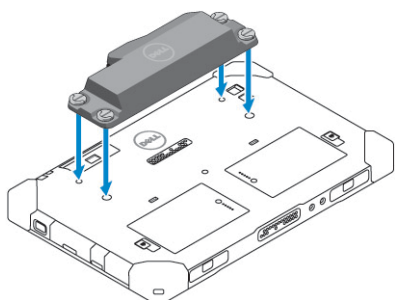
Features Overview



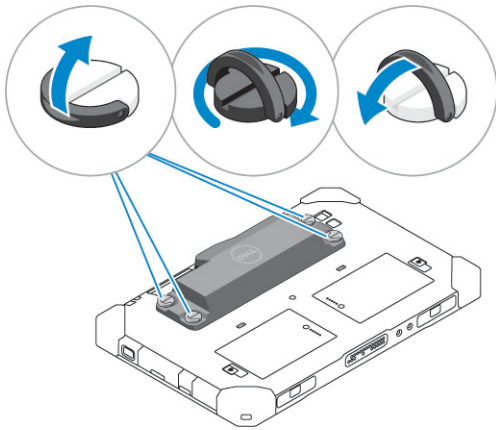
The Barcode and Magnetic Stripe Reader for Latitude 12 Rugged Tablets is a plug-and-play device and very easy to install. All you need to do is:

1. Turn the tablet over and align the screws to the holes at the back of the tablet.

 **NOTE:** The scanner is designed to fit the docking port at the back of the tablet.



2. Lift up the screw handles and tighten all four screws.



3. The scanner is now ready for driver installation.

Driver installation

1. To install the drivers, go to www.dell.com/support and enter the service tag of the laptop to see all the drivers and downloads available for your laptop.

Product support Top resources Orders & support requests

how to fix a computer that won't turn on or start windows

If you have questions about Office 2013 and Office 365, this article will help you find the answers.
[Office 2013 frequently asked questions](#)

Identify the product you need to support

Auto-detect your product.
[Detect Product](#)

Enter a Service Tag or Express Service Code.
 [Submit](#)

Both product IDs are located on the back or bottom of your device. [See details](#)

Browse for a product.
[View products](#)

2. Alternately, you can also search for the drivers manually by clicking **View products** (a) and navigating to **Latitude** (b) and selecting the Latitude model (c).

Product support Top resources Orders & support requests

how to fix a computer that won't turn on or start windows

If you have questions about Office 2013 and Office 365, this article will help you find the answers.
[Office 2013 frequently asked questions](#)

Identify the product you need to support

Auto-detect your product.
[Detect Product](#)

Enter a Service Tag or Express Service Code.
 [Submit](#)


Both product IDs are located on the back or bottom of your device. [See details](#)

Browse for a product.
[View products](#)

Identify the product you need to support


Auto-detect your product.

[Detect Product](#)




Enter a Service Tag or Express Service Code.

[Submit](#)



Both product IDs are located on the back or bottom of your device. [See details](#)

Browse for a product.



[View products](#)

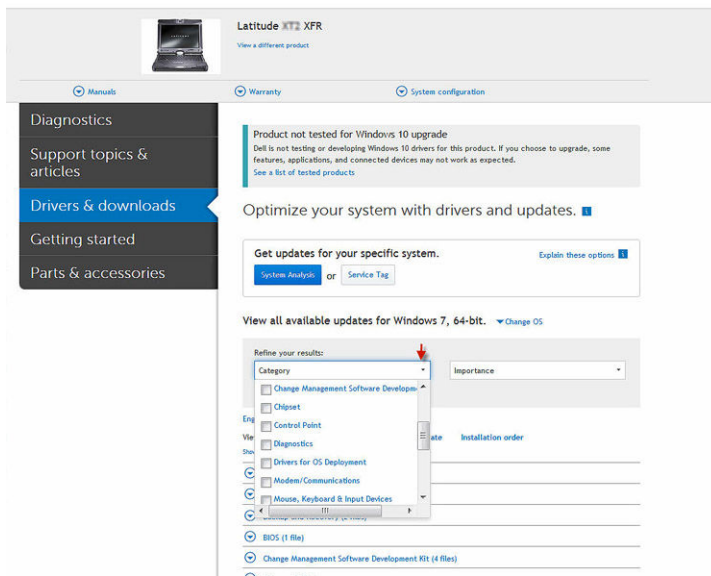
Select a product / Laptops

- | | | | |
|----------------------------|--------------------------------|--|---------------------|
| Adamo | Inspiron | Precision Mobile Workstation | XPS |
| Alienware | Latitude | Studio | |
| Chromebook | Legacy Systems | Vostro | |

Select a product / Laptops / Latitude

- | | | | |
|---|--------------------------------|-------------------------------------|-------------------------------------|
| C/Dock Expansion Station | Latitude C640 | Latitude D810 | Latitude E6440 |
| C/Dock II Expansion Station | Latitude C800 | Latitude D820 | Latitude E6500 |
| C/Port APR | Latitude C810 | Latitude D830 | Latitude E6510 |
| C/Port II APR | Latitude C840 | Latitude E4200 | Latitude E6520 |
| Latitude 10 | Latitude CP | Latitude E4300 | Latitude E6530 |
| Latitude 100L | Latitude Cpi | Latitude E4310 | Latitude E6540 |
| Latitude 10e ST2E | Latitude CPi A | Latitude E5250/5250 | Latitude E7240 |
| Latitude 110L | Latitude CPi R | Latitude E5400 | Latitude E7250/7250 |
| Latitude 12 Rugged Extreme 7204 | Latitude CPt | Latitude E5410 | Latitude E7440 |
| Latitude 12 Rugged Tablet 7202 | Latitude CPt S | Latitude E5420 | Latitude E7450 |
| Latitude 120L | Latitude CPt V | Latitude E5420M | Latitude L400 |
| Latitude 13 | Latitude CPv H | Latitude E5430 | Latitude LM |

3. Click **Drivers & downloads** and then select the scanner drivers from the drop-down box in **Category**.



4. Download the drivers to your local drive and click on the zipped file to install.
5. The Barcode and Magnetic Stripe Reader for Latitude 12 Rugged Tablet is now ready for use.

Technical specifications

Table 1. PHYSICAL CHARACTERISTICS

Dimensions	202 mm L x 75 mm W x 26 mm H
Weight	153 grams

Table 2. DECODE RANGES

	Near	Far
3 mil Code	2.8 in./7.1 cm	6.2 in./15.8 cm
5 mil Code	2.3 in./5.8 cm	8.7 in./22.1 cm
5 mil PDF417	3.0 in./7.6 cm	8.1 in./20.6 cm
6.67 mil PDF417	2.2 in./5.6 cm	10.6 in./26.9 cm
10 mil DataMatix	2.4 in./6.1 cm	10.6 in./26.9 cm
100% UPCA	1.6* in./4.1* cm	23.0 in./58.4 cm
15 mil Code 128	2.4* in./6.1* cm	25.2 in./64.0 cm
20 mil Code 39	1.6* in./4.1* cm	36.3 in./92.2 cm

*Field of view limited

Table 3. REGULATORY

Laser Classification	Intended for use in CDRH Class II/IEC 825 Class 2 devices
Electrical Safety	UL, VDE, and CU recognized laser component
Environmental	RoHS Compliant


Regulatory Notices

For additional regulatory information, see the Regulatory Compliance homepage on www.dell.com at the following location: www.dell.com/regulatory_compliance.



WARNING: While the Barcode and Magnetic Stripe Reader for Latitude 12 Rugged Tablet is ANSI 12.12.01 compliant, this approval applies ONLY to configurations where the scanner is affixed to a Hazardous Location-approved Latitude 12 Rugged Tablet. If the Latitude 12 Rugged Tablet is not specifically marked as suitable for Class I Division 2 Hazardous Locations, then the combination of scanner and tablet is NOT considered as Haz Loc approved and should not be used in such locations.

Contacting Dell

 **NOTE:** If you do not have an active Internet connection, you can find contact information on your purchase invoice, packing slip, bill, or Dell product catalog.

Dell provides several online and telephone-based support and service options. Availability varies by country and product, and some services may not be available in your area. To contact Dell for sales, technical support, or customer service issues:

1. Go to **Dell.com/support**.
2. Select your support category.
3. Verify your country or region in the **Choose a Country/Region** drop-down list at the bottom of the page.
4. Select the appropriate service or support link based on your need.